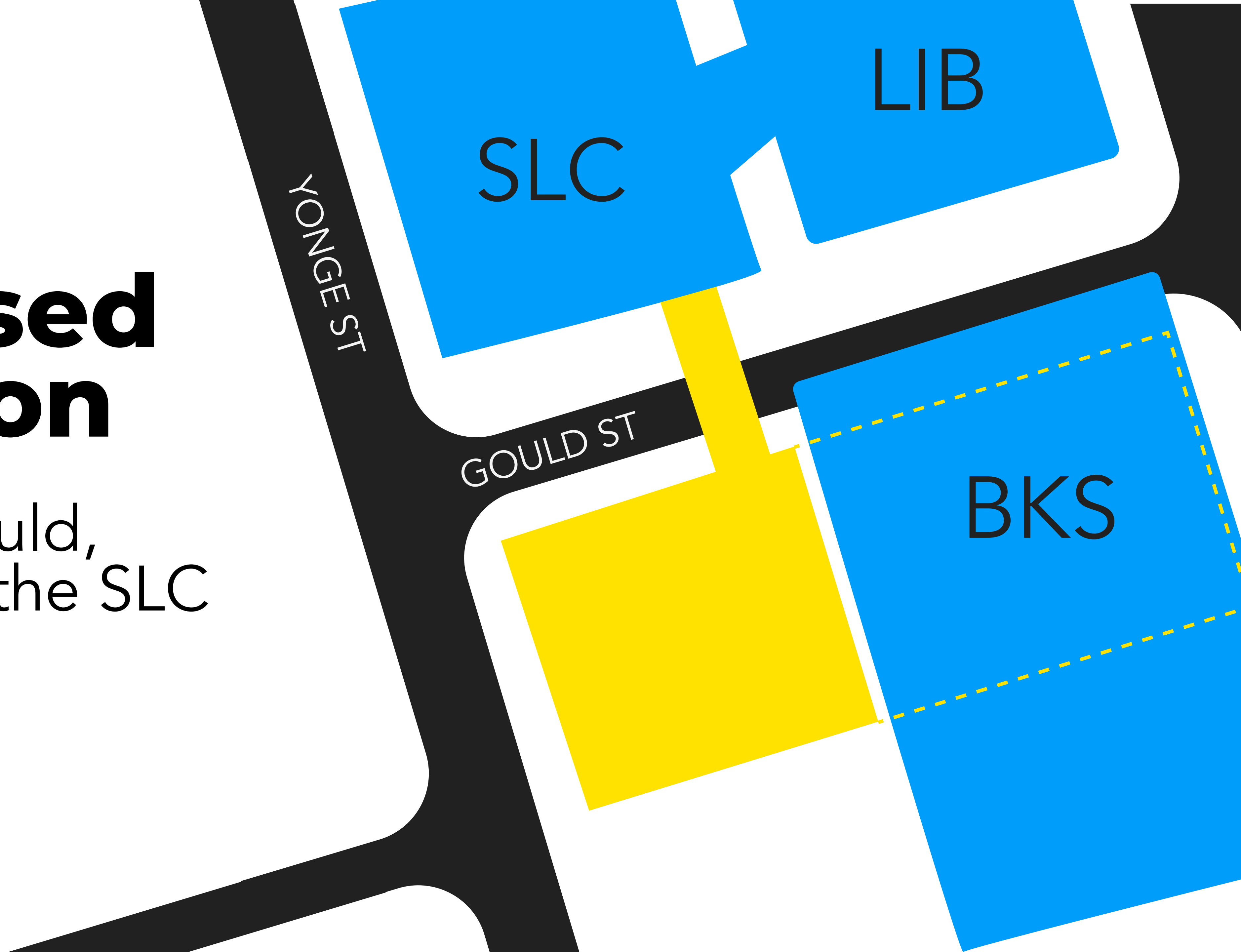


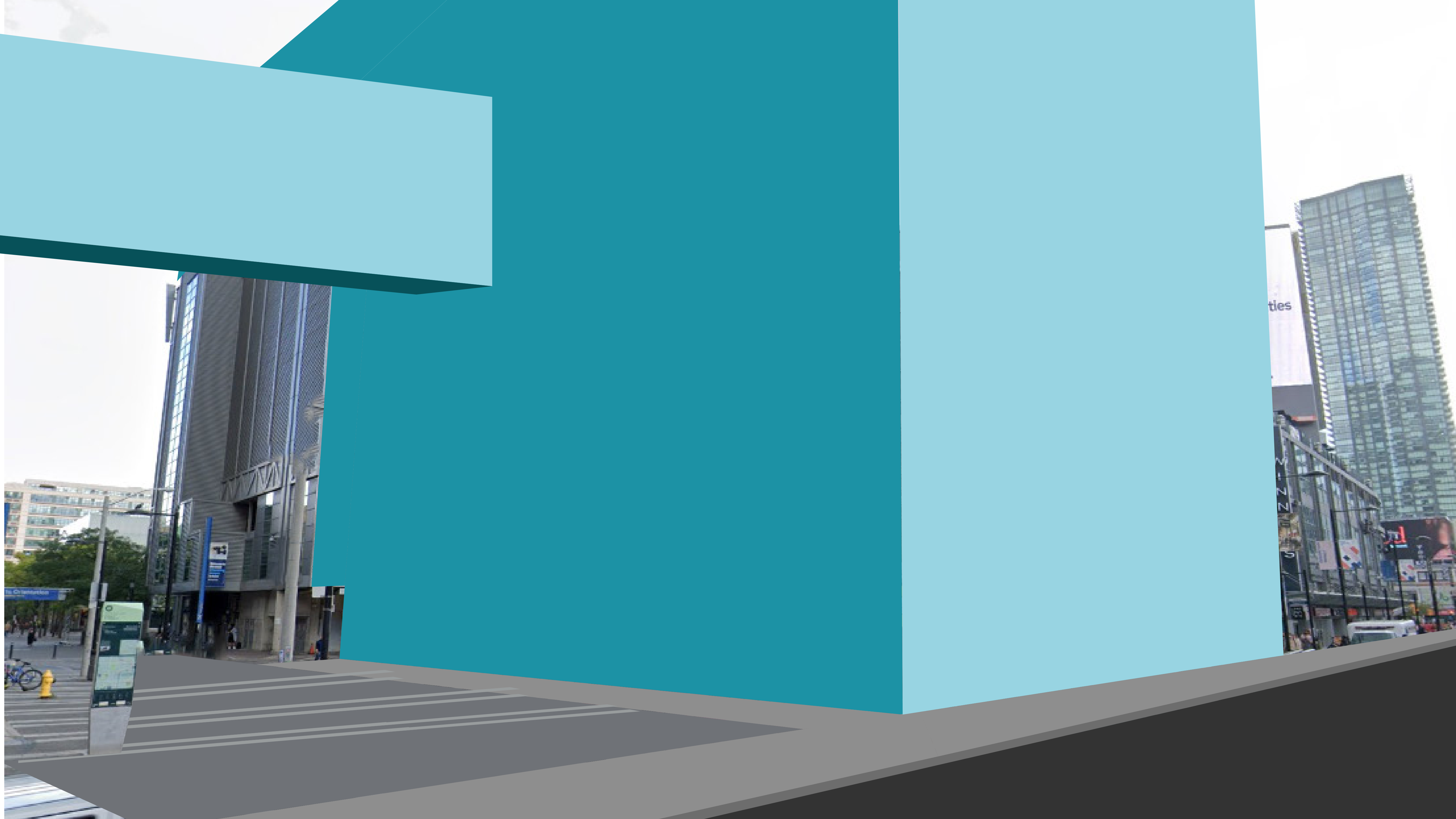
**Toronto Metropolitan University**

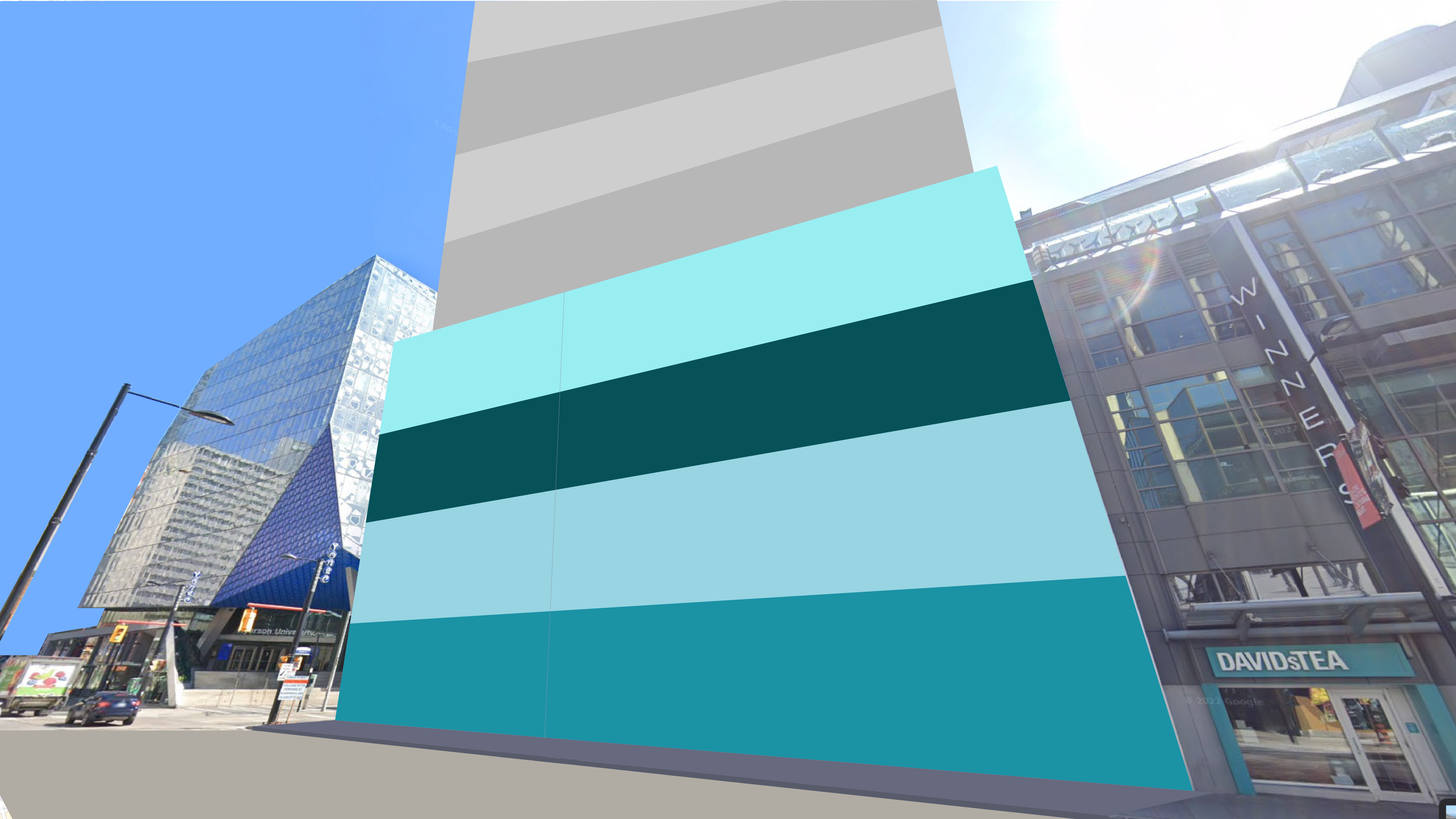
**SECOND  
STUDENT  
CENTRE**

# Proposed Location

Yonge & Gould,  
across from the SLC



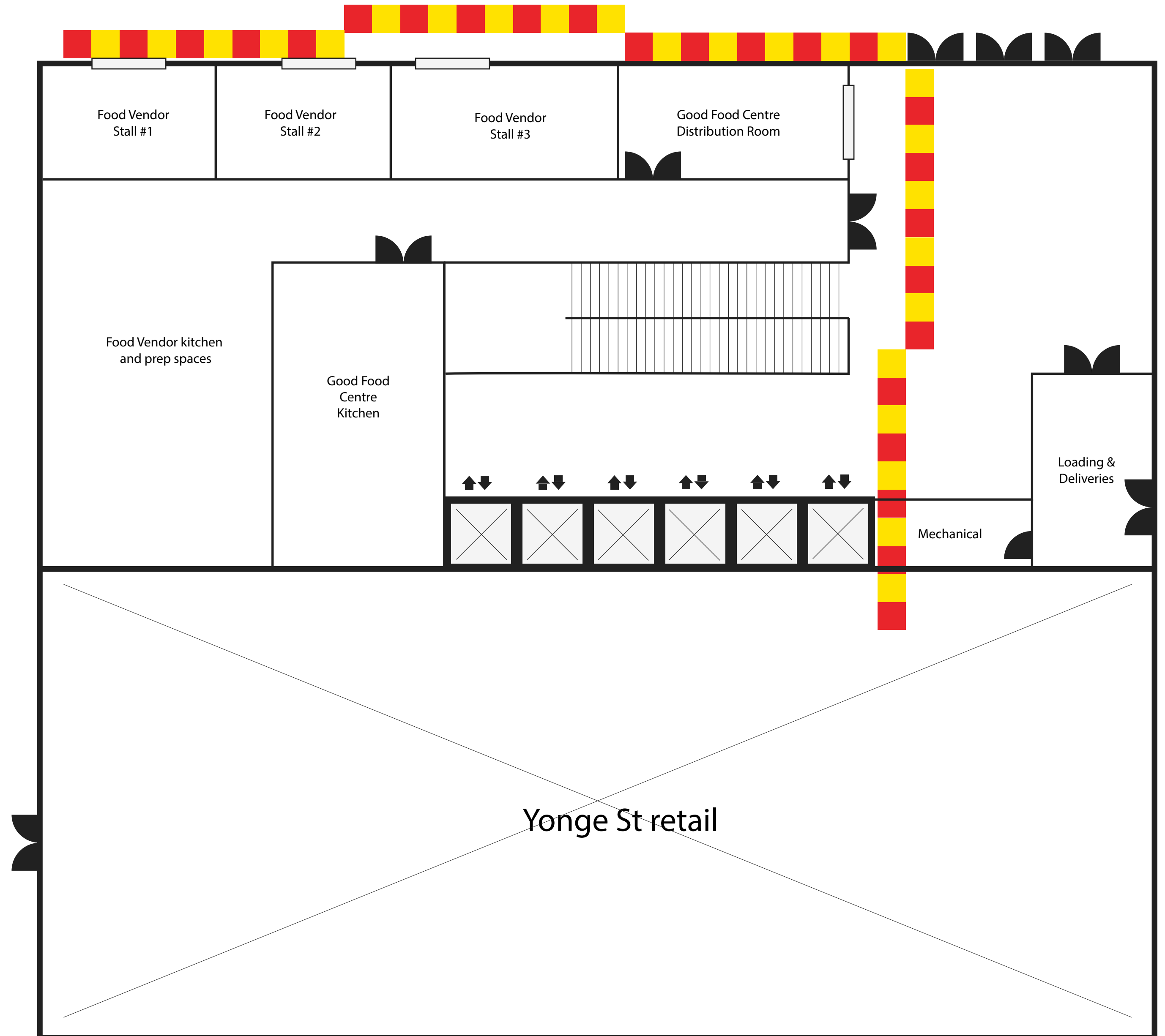




# Ground Floor

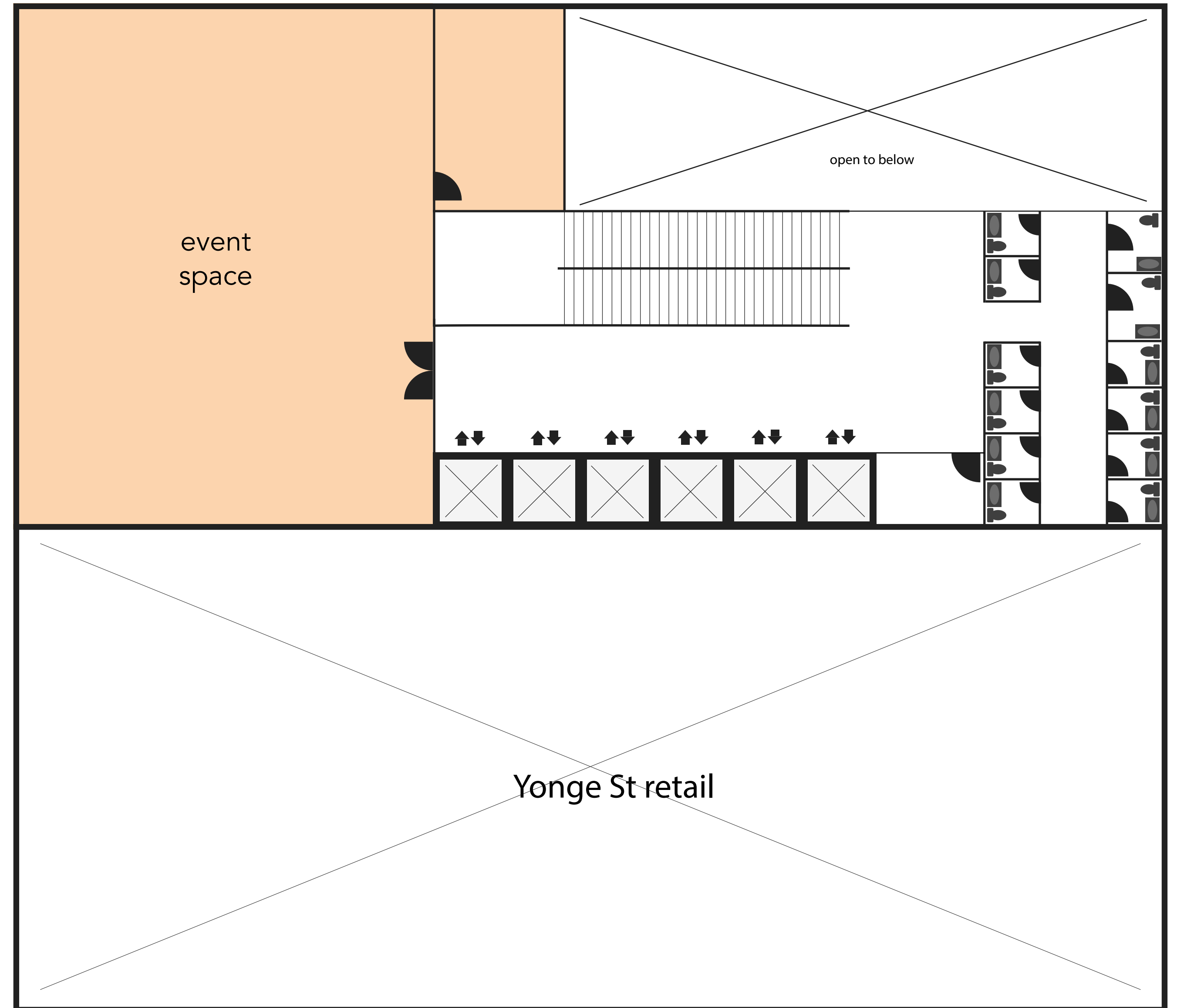
Front desk / security desk could fit in the main floor

Permanent spaces for food stalls facing outside to the street

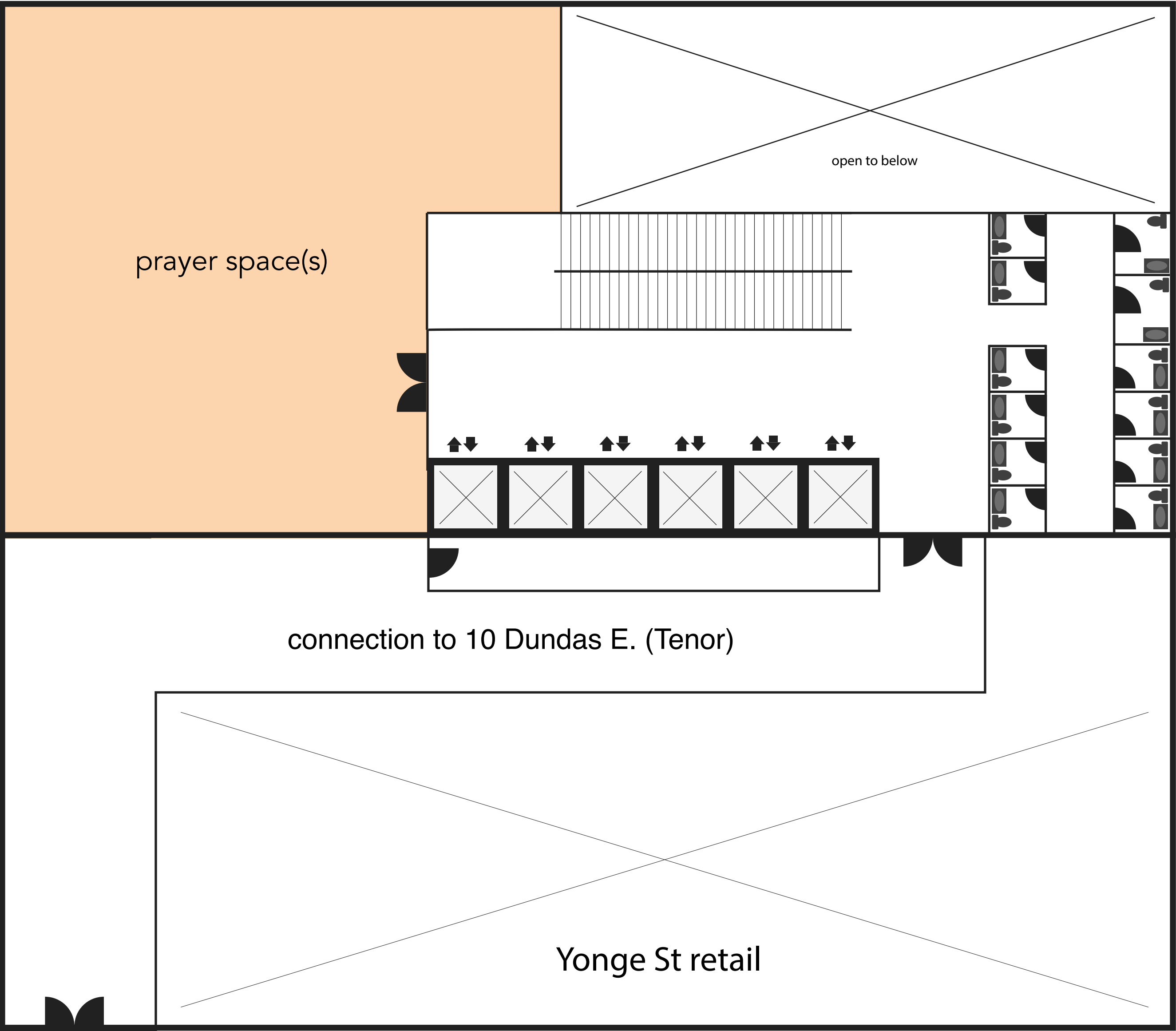


# Second Floor

Premium event space for the TMU community, overlooking the soon to be redeveloped Yonge St., facing north-west with a clear view of the SLC



# Third Floor

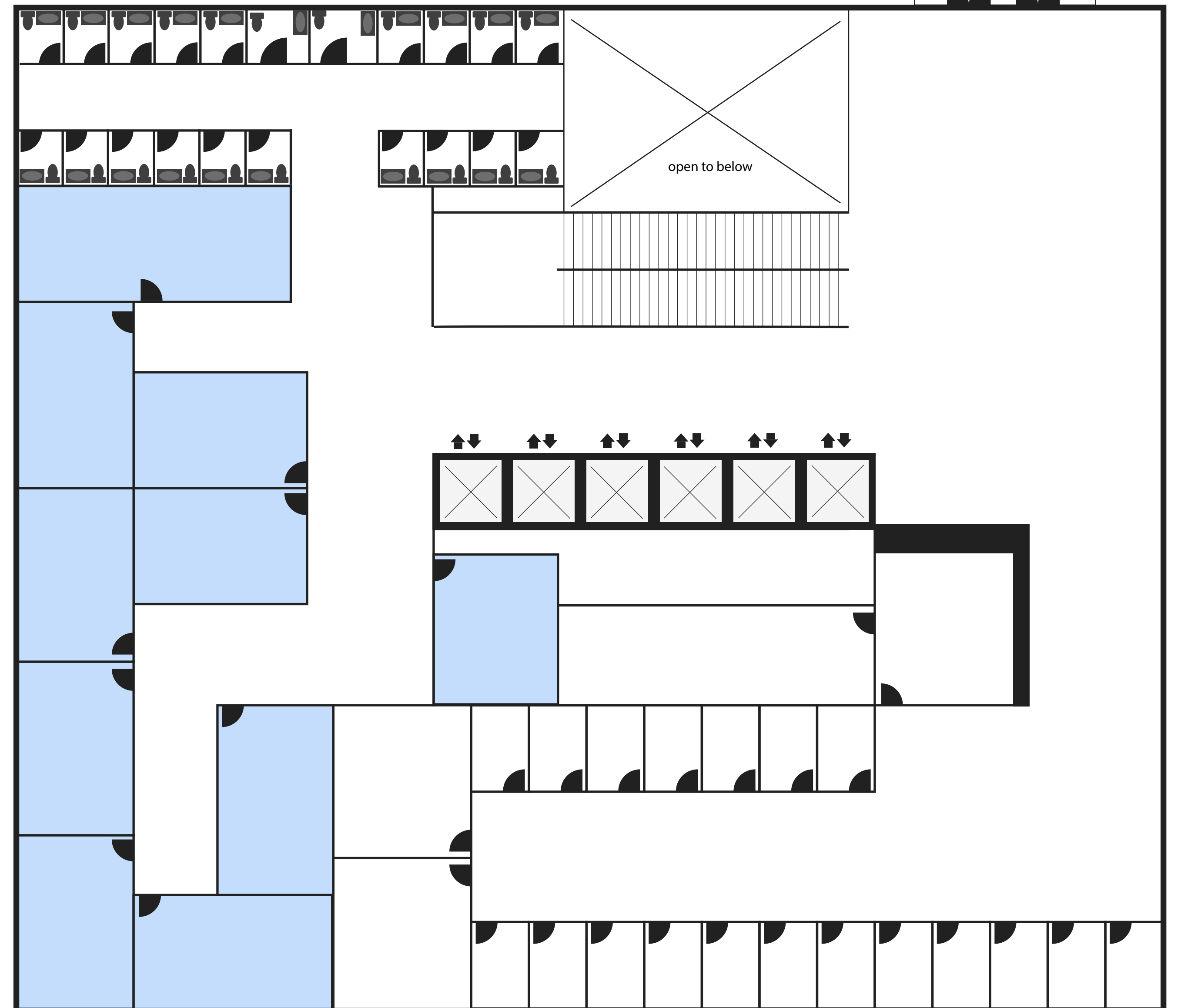


# Fourth Floor

10 group study rooms

19 private phone / meeting booths

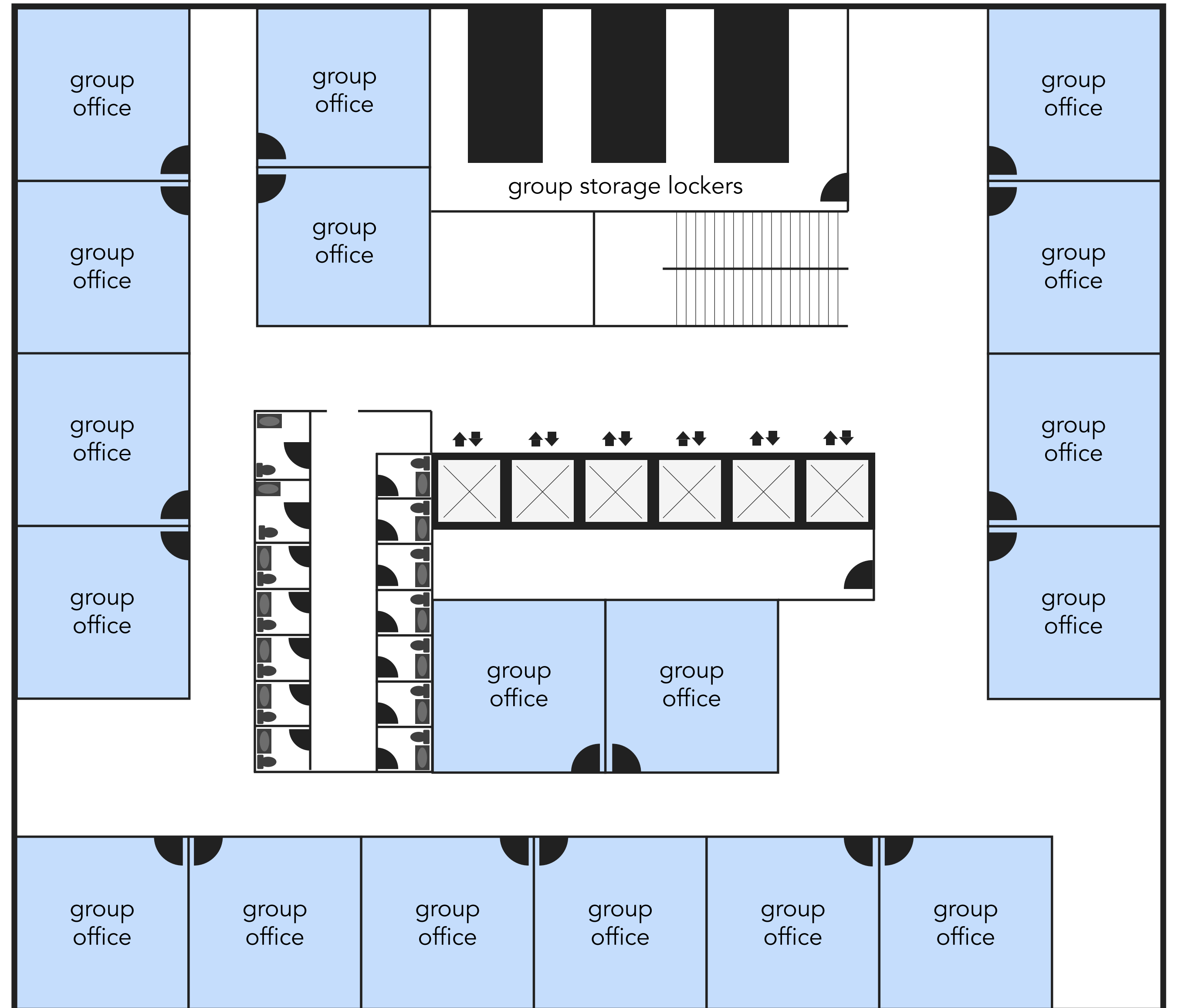
Reception desk for building services and room bookings



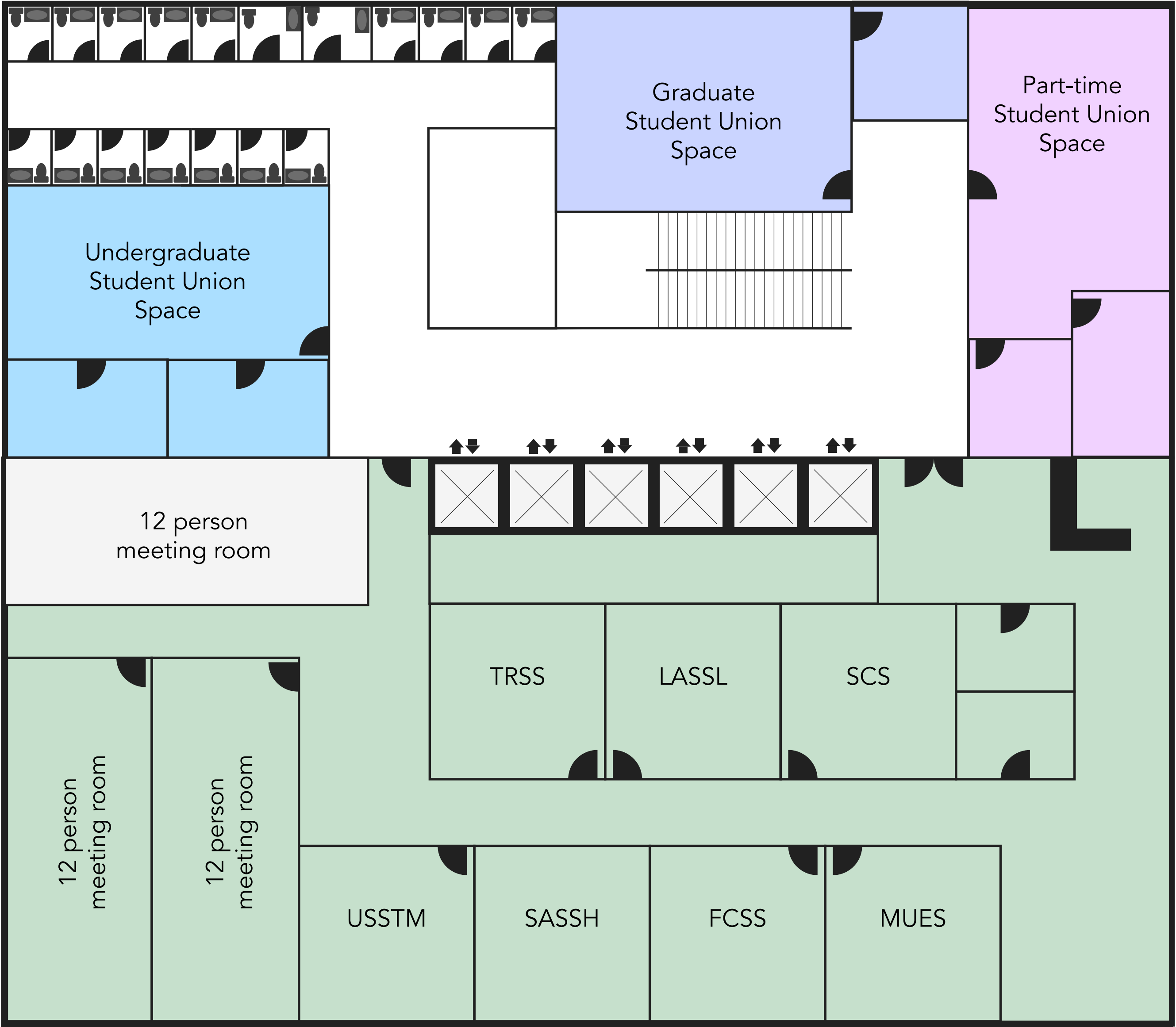
# Fifth Floor

18 student group offices,  
each can fit two desks and  
storage cabinets

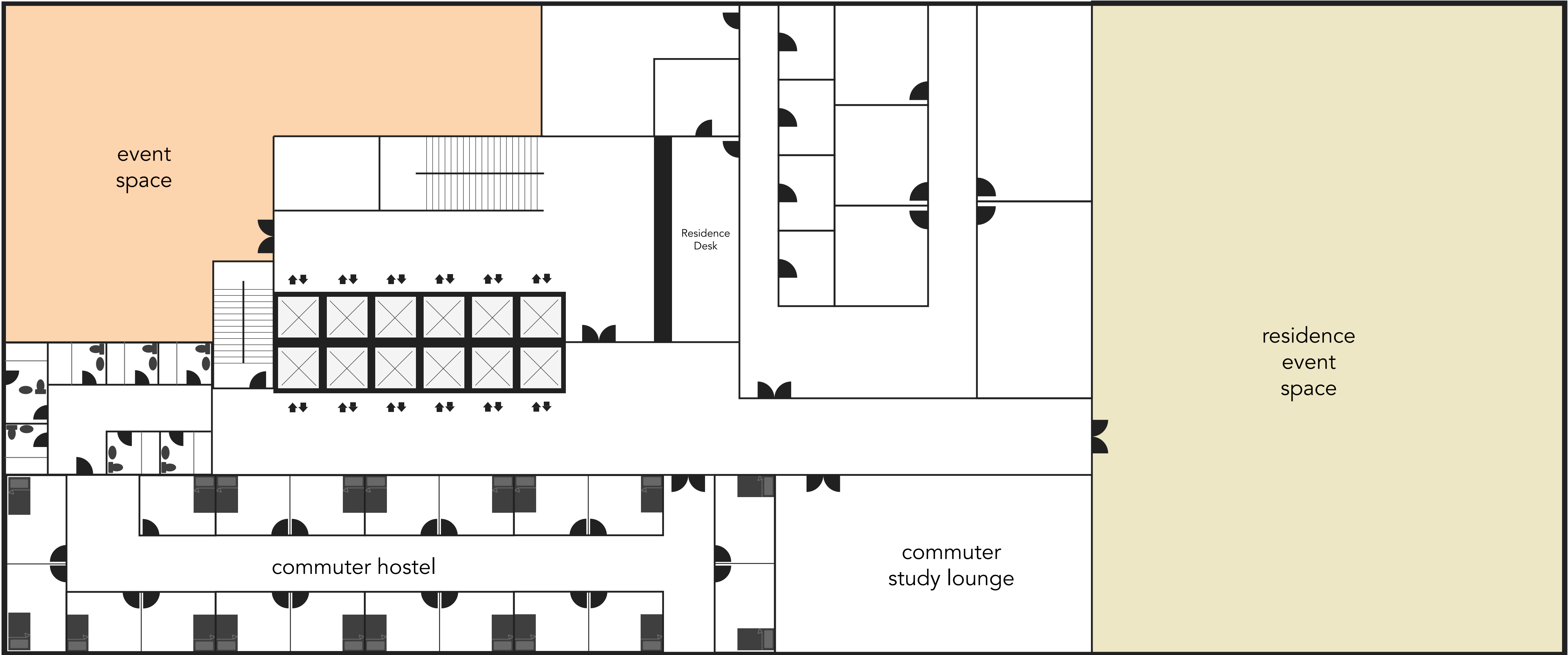
**10m<sup>2</sup> each**



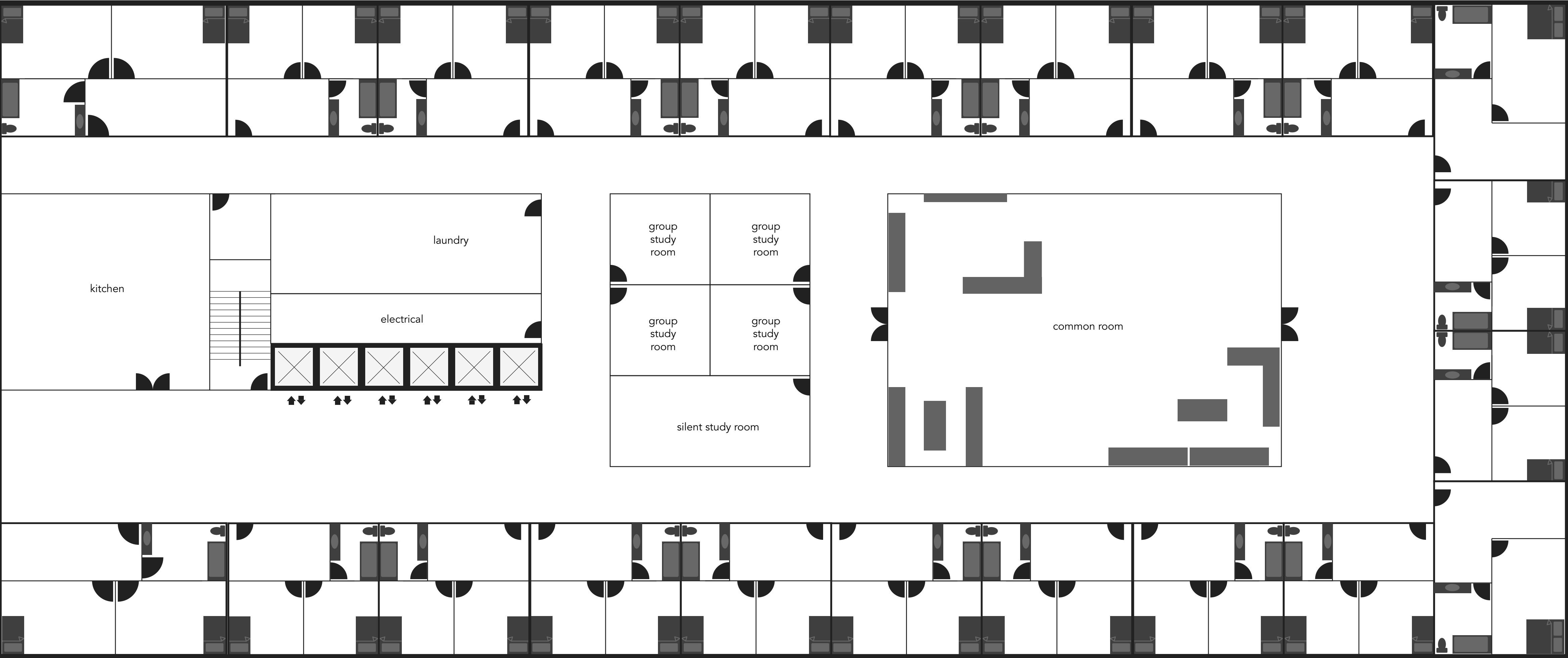
# Sixth Floor



# Seventh Floor



# Residence Floors



Scale  10 m